

АвторАвторАвто

Backup Backup Backup starting starting starting

Use this method when the fuses are not installed or when the remote control battery is dead.

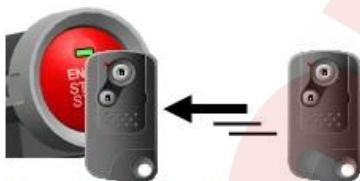
1. Press the start/stop switch.



2. The buzzer in the passenger compartment sounds 6 times, a message appears on i-MID (only if the fuses are installed) and the indicator on the switch flashes (A).



3. Bring the H-mark(emblem) of the remote in front of the start/stop switch while the indicator is flashing (within 30 seconds).



4. As soon as communication is completed, a new message appears on the i-MID (only if the fuses are installed) and the indicator changes from flashing to illuminating mode (B).



5. Within 10 seconds, push the brake pedal (AT) or clutch pedal (MT) and push the start/stop switch simultaneously. The engine will start.



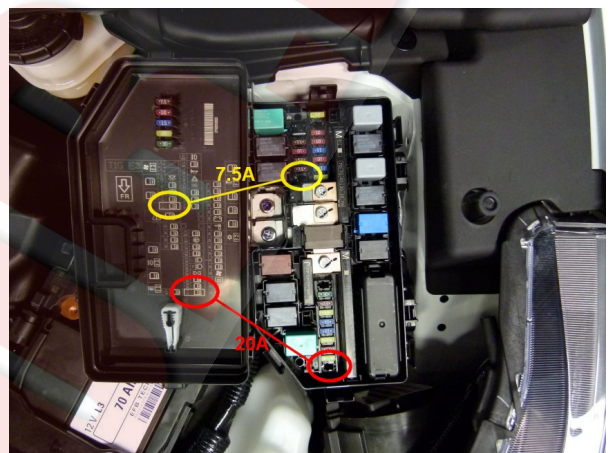
6. To stop the engine push the start/stop switch.

Note: Do not use the start/stop switch when the gear lever is in the P (Park) position (AT) and the P (Park) position (MT). Make sure the start/stop switch is in the OFF position!!!!!!

Installation of the back-up fuse installation

Install the Back-up fuse(s) as shown below.

Note : Petrol models with AT only have the 20A fuse to be installed. All other models have the 20A and the 7.5A fuse to be installed.



Installation Method for the Back-up Fuse

- 1) Turn the ignition **OFF** (key out of the ignition cylinder).

Note: For Smart Entry vehicles ensure that the ignition is **OFF** (key out of the ignition cylinder).

- 2) Install the 2 back-up fuses to the position shown above.

Note: If the fuses are installed with the ignition on or engine running, a communication error will occur and a DTC will be set between the MICU and the Rain sensor. The communication error will cause the rain sensor to malfunction and the Automatic wipers will not function correctly.

If the above situation occurs then resetting the MICU will resolve the problem, to reset the MICU follow the procedure below.

MICU Reset Procedure

- 1) Turn the Ignition off (key out of the cylinder).
- 2) Pull the 7.5A back-up fuse out (20A for AT petrol).
- 3) Wait for 10 seconds.
- 4) Put the 7.5A back-up fuse back in (20A for AT petrol).

- 5) Turn the Ignition on.
- 6) Check the Auto wipe function works correctly.

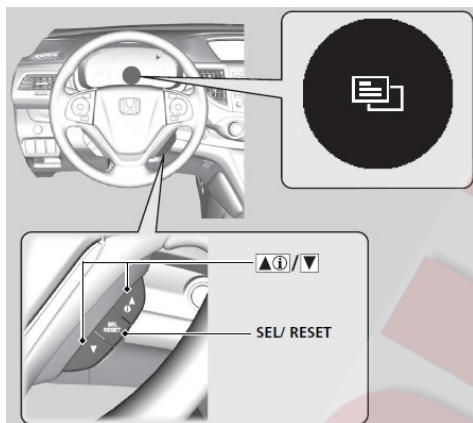
Changing Challenges for the mid-20th century

Note:

1. The default language is English.
2. If power to the i-MID has been interrupted (battery disconnected or fuse removed) and is re-in stalled, the language selection screen automatically appears.

MID

1. Switch on the ignition and push the up/down buttons on the steering wheel until you see the Menu display.



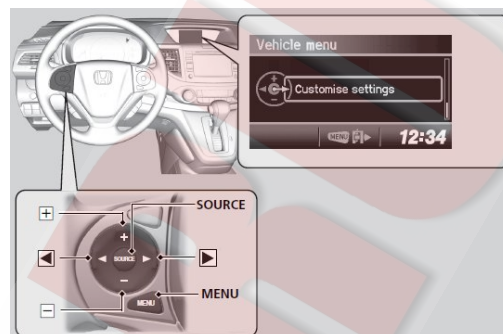
2. Push SEL/RESET to select the Menu, then push the up/down buttons until you see Language.
3. Push SEL/RESET to select Language, then push the up/down buttons until you see the required language.
4. Push SEL/RESET to select the required language, then push the up/down buttons until you see the return symbol.



4. Push SEL/RESET to return. Repeat this procedure to return to the main menu.

i-MID

1. Switch on the ignition and push the MENU button on the steering wheel.



2. Push SOURCE or right button to select Customise settings.
3. Push +/- to select Display setup, then push SOURCE or right button.
4. Push +/- to select Language, then push SOURCE or right button.
5. Push +/- to select your language, then push SOURCE or right button.
6. To return to the menu, push left button several times or to leave the menu, push MENU once.

RemovalRedoRollbackRepeatUndoRepeatersstoppersstoppers

Remove all the body wax stoppers from the chassis.

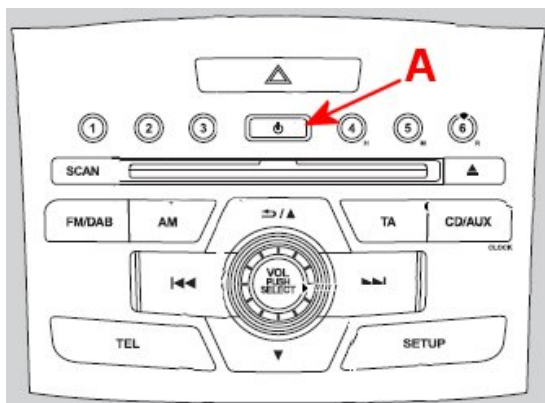


NewNewNewNiethedigitalfirststatesthe system

Whenever power to the audio/navi unit has been interrupted (eg battery disconnection), there's no need to input a pin code.

Switch on the ignition and when the display asks you, push and hold the power button A for 2 seconds. The audio/navi unit will automatically recognize the VIN.

Audio equipped

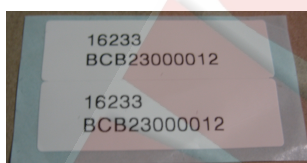


NAVI equipped



A : Power button

Note : There's no anti-theft code card anymore, but there are 2 stickers in the glove box that need to be put in the Service Manual.



Setting the Clock

Models without navigation system

You can adjust the time in the clock display with the ignition switch in ON II.

1. Press the MENU button on the steering.
2. Select "Adjust clock" with the +/- buttons, then press the "SOURCE" button.
3. Press the +/- buttons to change the setting between 12H and 24H
4. Select hours or minutes with the ◀/▶ buttons.

5. Press the +/- buttons to adjust the numbers up or down.

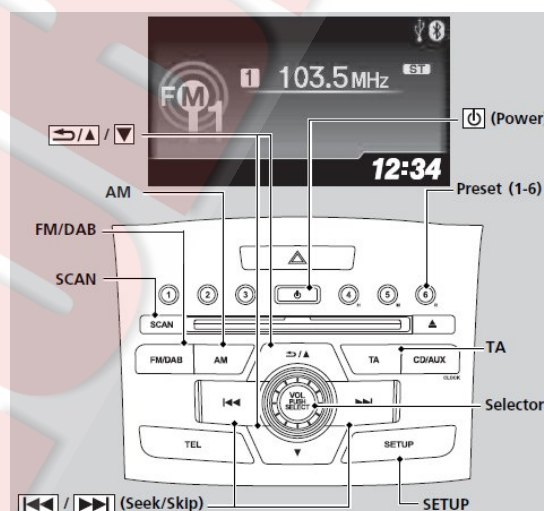
6. Select Enter with the ◀/▶ buttons, then press the SOURCE button to enter your selection.

Models with navigation system

The clock is automatically updated through the navigation system, so the time does not need to be adjusted.

Pre-setting and setting stations

Non-NAVI



1. Turn the ignition to the accessory position and switch on (Power) the radio.

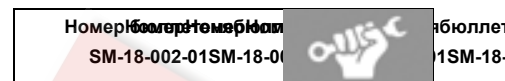
2. Using the Seek/Skip buttons or the Selector, select the favourite stations.

3. Push a Preset (1-6) button and hold until you hear a beep. The station is pre-set.

4. You can preset stations on different bands. To select another band, press AM or FM/DAB.

NAVI

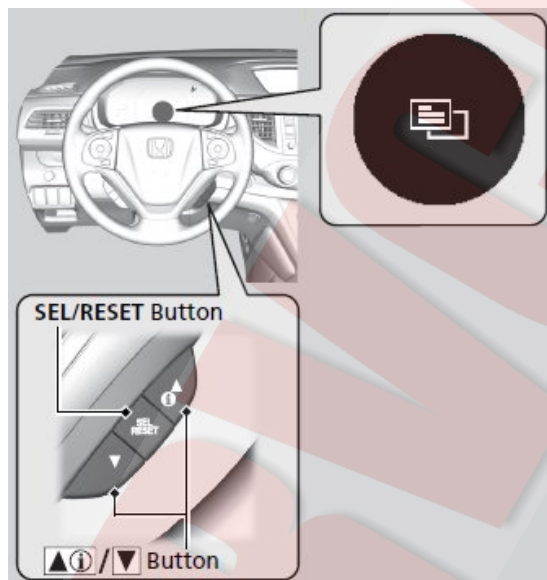
1. Turn the ignition to the accessory position and switch on (Vol/Push) the radio.



2. Using the Seek/Skip button, select the favourite stations.
3. Push a Preset (1-6) button on the screen. The station is pre-set.
4. You can preset stations on different bands. To select another band, press SOURCE (A).

Customizing Customer Engagement and Settings

1. Switch on the ignition and push the ▲/▼ buttons on the steering wheel to select the menu.



2. Push SEL/RESET to enter the menu.
3. Push the ▲/▼ buttons on the steering wheel to highlight an item and SEL/RESET to select it.
4. To return, highlight the Back to menu symbol and

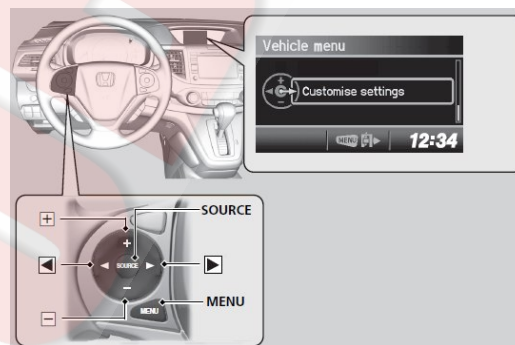
select it with SEL/RESET.



Customise settings according to the customer's preferences. Refer to the attached list.

Customizing Customer Data and Descriptions

1. Push the MENU button on the steering wheel.



2. Push SOURCE or right button to select Customise settings.
3. Use the +/- buttons to highlight an item, then SOURCE or right button to select it.
4. Customise settings according to the customer's preferences. Refer to the attached list.
5. To return, push left button or to return to the menu, push MENU.

Customizing Customer Relationship Management System

The high beam support system has a number of settings that can be changed.

To change the settings, connect the HDS to the car and select :

Honda Systems - Body Electrical - High Beam Support System - Adjustment

Please use the attached Menu to register the customer's preferences.

Idle Idle Idle Procedure Procedure Procedure

As part of the PDI process the idle learning status must

be checked using HDS and carried out if it is not in a completed status.

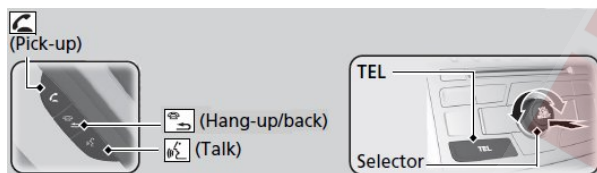
Refer to the shop manual for the full procedure.

Bluetooth pairing (NAVI-models) (NAVI-models) (NAVI-models)

1. Ensure the mobile phone bluetooth is turned on and it is in discovery mode.



2. Press the TEL button or the "Pick-up" button.



3. Rotate the Selector to select Yes, then push it to confirm.

4. Choose the phone to be paired and push the Selector to confirm.

5. Enter the 4-digit code displayed on the screen into the mobile phone.

6. You will receive a message on the screen that pairing has been done.

Bluetooth pairing (NAVI-models) (NAVI-models) (NAVI-models)

1. When no Bluetooth-compatible phone has ever been paired to the system, a screen appears saying :

"Confirmation : No phone is paired to the system. Would you like to add new phone now ?"

2. Select Yes.

3. Ensure the mobile phone bluetooth is turned on and it is in discovery mode.

4. Select OK. The system begins to search for your phone.

5. Select your phone in the list.

6. Enter the 4-digit pairing code on your phone when prompted to complete the pairing process.

Deflation Warning System

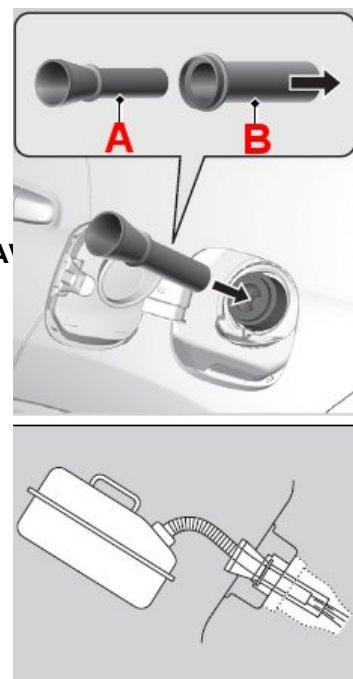
If a customer or dealer changes the wheel size without changing the threshold value a DWS warning will appear in the MID.

There are three threshold groups for the DWS : 17, 18 and 19 inch.

When changing the wheel size, you must change the threshold value using HDS. The threshold value can be changed by going to the VSA/ABS menu then select Deflation Warning System.

Emergency Refueling

If you need to refuel with a non-standard diesel filler nozzle or from a portable fuel container, use the funnel (A) located in the spare wheel well. Remove the funnel (A) from the case (B) and insert it in the filler neck.



Important notes

1. In some conditions, idle stop may be inhibited and

the iMID will show a symbol depicting the reason : high or low coolant temperature, climate control system in use or low battery.



2. On diesel equipped cars, it is necessary to disconnect the negative cable when charging the battery. If not, the charge sensor connected to the negative pole will give a false reading and the battery charge management system may not work properly.
3. If applicable to your country, switch on the Service Reminder System.
4. Connect HDS to the car, check if any DTCs are stored, clear them and road test to confirm no DTCs come on.

~~5.5.6 The Fuel Tank Fill Valve will shut off if the case is deleted.~~